

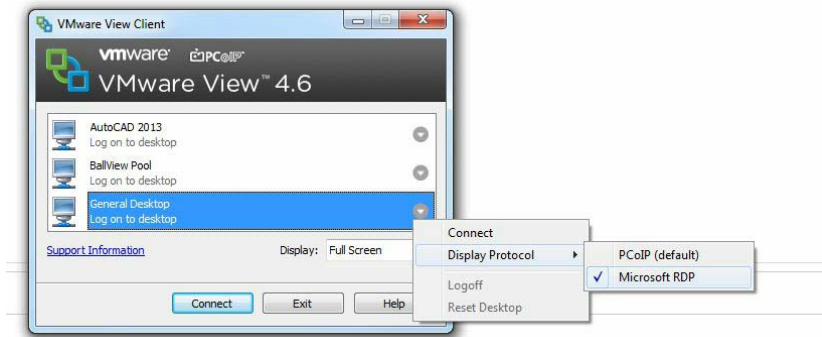
Running SAS from VLAB

If you want to run SAS on a computer that doesn't have SAS installed, you can access SAS through LSU's VLAB.

Use the GROK article <http://grok.lsu.edu/article.aspx?articleid=16074>. In this article are links to additional articles describing how to download the VMware View Client, install it, and launch it.

Once you have installed the VMware View Client, get into SAS using the following steps:

1. Run VMware View Client.
2. Connect (Connection Server: vlab2.lsu.edu)
3. At the welcome screen, OK.
4. Type your User Name: (your PAWS ID) and password, Domain: LSU, then click Login.
5. Click the gray button to the right of General Desktop, click Display Protocol, then click Microsoft RDP.



6. With General Desktop, Log on to Desktop highlighted, click Connect.
7. Once you see the notice screen, click OK.
8. On the Welcome to VLAB screen, Start > All Programs > SAS > SAS 9.3 (32) (English).
9. Within your SAS programs, to access files on your hard drive (e.g., data files, SAS data sets, etc.), substitute \\tsclient\c for c: (or use whatever drive letter corresponds to the drive containing your file(s)). This works with USB drives, too.

Local computer	libname orion 'c:\SAS_class_files\PRG1data';
VLAB	libname orion '\\tsclient\c\SAS_class_files\PRG1data';